



- Multiparameter diagnostics in microtiter plate format
- Built-in controls and reference curve
- Intuitive software for non-biased evaluation
- Efficient and user-friendly

SeraSpot[®]

SeraSpot® meets efficient multiparameter diagnostics

The product platform SeraSpot® connects the diagnostic capabilities of modern array technologies with the advantages of established and automated ELISA techniques. It enables the simultaneous detection of up to 24 parameters from a single patient sample in one microwell. Each well of the 96-well microtiter plate contains an array of autoantigens or pathogen-derived antigens, precisely printed in nanoliter volumes.

These serve as highly specific targets for antibodies in patient samples, ensuring accurate and efficient detection of autoimmune and infectious diseases. Proprietary Seramun SpotSight® devices, including intuitive software, reliably capture and interpret the developed arrays. The user-friendly software allows seamless integration into Laboratory Information Management Systems (LIMS), making SeraSpot® an ideal solution for modern diagnostic workflows.

Your complete solution in the diagnosis of autoimmune or infectious diseases



SeraSpot® Array

- Multiparameter analysis
- Integrated controls
- Durable spot staining



Seramun SpotSight® well

- Maintenance free
- Low sample throughput
- 8-well strip reading



SeraSpot® Test kit

- Ready-to-use reagents
- Universal protocol
- Breakable 8-well strips



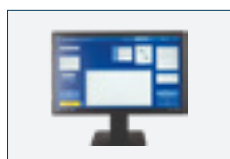
Seramun SpotSight® plate mono

- Low maintenance
- High sample throughput
- 96-well plate reading



SeraSpot® Application

- ELISA processor compatible
- High sample throughput
- Efficient reagent use



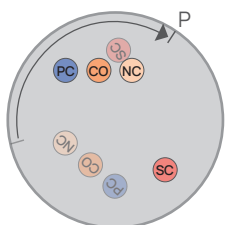
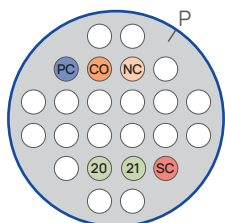
Seramun SpotSight® scan

- Ease of use
- Non-biased evaluation
- Streamlined data integration

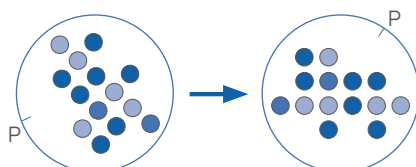
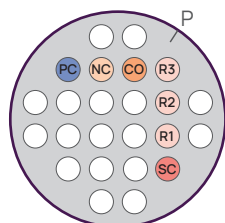
SeraSpot® meets high quality standards

- High-level quality assurance in every test with up to five integrated controls
- Precise quantification in rel. U or IU (anti-dsDNA) using dedicated reference curve spots
- Reliable evaluation through well-position markers ensuring correct image alignment
- Color-coded test strips to prevent mix-ups and simplify handling

Infectious diseases



Autoimmune diseases

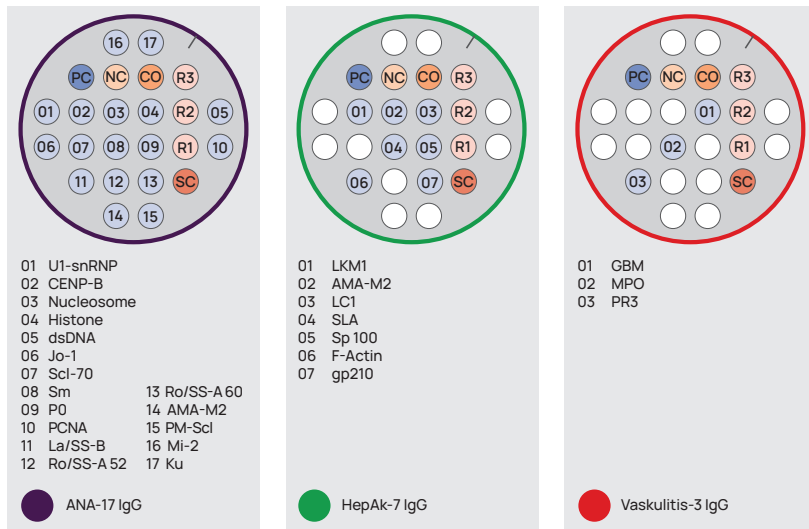


- Positive control PC
- Negative control NC
- Cut-off control CO
- Serum control SC
- IgG conjugate control 20
- IgA/IgM conjugate control 21
- Reference spots R1-R3

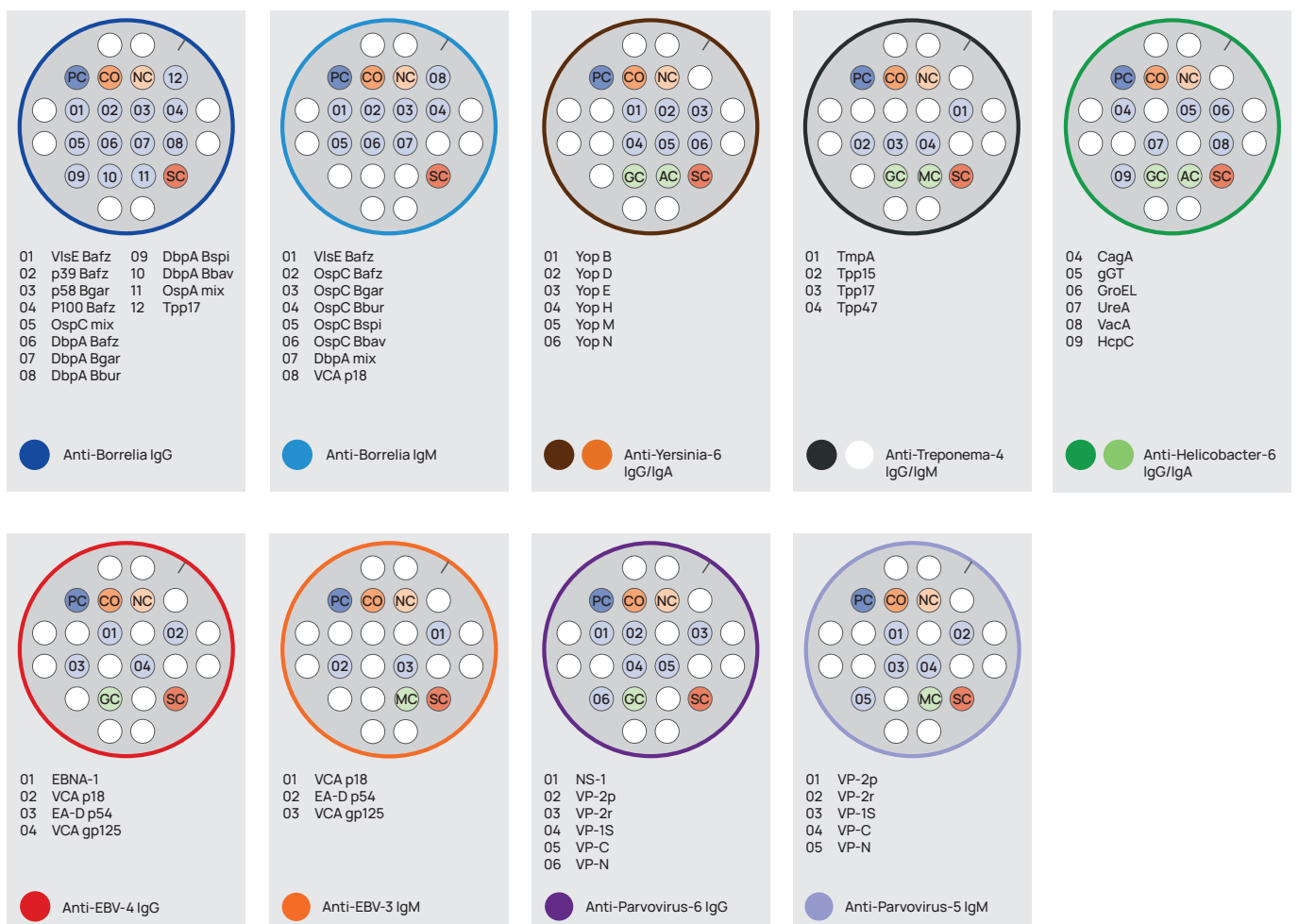
The well position marker P serves to correct the position of images in case of using broken 8-well strips or single wells

SeraSpot® meets ideal antigen selection

... for the detection of autoimmune diseases

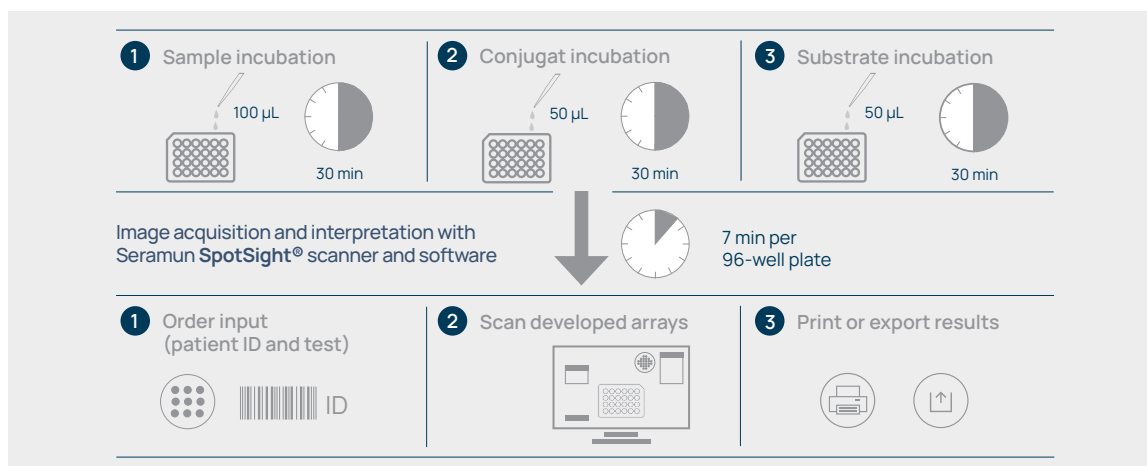


... for the detection of infectious diseases



SeraSpot® meets user requirements

The quick and easy test procedure to increase your economic efficiency



Ordering information

Overview of SeraSpot® Portfolio for the specific antibody detection in serum and plasma

| Product | Description | Quantity | Art. No. |
|---|--|--------------------|------------------------|
| SeraSpot® – Infectious Disease Diagnostics (IDx) Portfolio | | | |
| SeraSpot® Anti-Yersinia-6 IgG SeraSpot® Anti-Yersinia-6 IgA | Detection of IgG/IgA antibodies against <i>Yersinia enterocolitica</i> specific antigens | 1x48/1x96 | SP-005-6G SP-005-6A |
| SeraSpot® Anti-Borrelia IgG SeraSpot® Anti-Borrelia IgM | Detection of IgG/IgM antibodies against <i>Borrelia burgdorferi</i> sensu lato specific antigens | 1x48/1x96 10x96 | SP-018G SP-018M |
| SeraSpot® Anti-Helicobacter-6 IgG SeraSpot® Anti-Helicobacter-6 IgA | Detection of IgG/IgA antibodies against <i>Helicobacter pylori</i> specific antigens | 1x48/1x96 | SP-007-6G SP-007-6A |
| SeraSpot® Anti-Treponema-4 IgG SeraSpot® Anti-Treponema-4 IgM | Detection of IgG/IgM antibodies against <i>Treponema pallidum</i> specific antigens | 1x48/1x96 | SP-010-4G SP-010-4M |
| SeraSpot® Anti-EBV-4 IgG SeraSpot® Anti-EBV-3 IgM | Detection of IgG/IgM antibodies against Epstein-Barr-Virus specific antigens | 1x48/1x96 | SP-013-4G SP-013-3M |
| SeraSpot® Anti-Parvovirus-6 IgG SeraSpot® Anti-Parvovirus-5 IgM | Detection of IgG/IgM antibodies of Parvovirus B19 specific antigens | 1x48/1x96 | SP-012-6G SP-012-5M |
| SeraSpot® – Autoimmune Diagnostics (AIDx) Portfolio | | | |
| SeraSpot® ANA-17 IgG | Detection of IgG autoantibodies against antinuclear and cytoplasmic antigens | 1x48/1x96 | SP-002-17G |
| SeraSpot® Vaskulitis-3 IgG | Detection of IgG autoantibodies associated with systemic vasculitis | 1x48/1x96 | SP-003-3G |
| SeraSpot® HepAk-7 IgG | Detection of IgG autoantibodies against antigens of autoimmune liver diseases | 1x48/1x96 | SP-004-7G |
| Hardware for automatic evaluation of SeraSpot® spot immunoassays | | | |
| Seramun SpotSight® well | Device for image acquisition of SeraSpot® tests in 8-well strips or single wells | 1 | SP-WELL-A |
| Seramun SpotSight® plate mono | Device for image acquisition of SeraSpot® tests in 96-well microtitration plates | 1 | SP-PLATE-D |
| Software for automatic evaluation of SeraSpot® spot immunoassays | | | |
| Seramun SpotSight® scan | Software to capture, analyze and archive SeraSpot® spot immunoassay images | 1 | SP-SCAN-A |

www.seramun.com

Seramun Diagnostica GmbH

Spreenhagener Str. 1
15754 Heidesee · Germany
T +49 33767 791-10

